

# WATER / OIL BRAZED PLATE OIL COOLER

HEAT EXCHANGERS

HEAT-EXCHANGERS

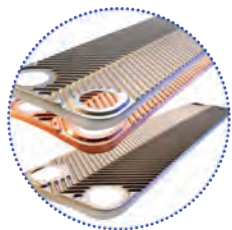
WB SERIES





## Brazed Plate Technology

Stainless steel brazed plate construction is one of the most advanced fluid cooling technologies available. This design has several significant features:



Copper Brazed  
Stainless Steel Plates

SAE O-Ring Oil Connections

### Technical Data

#### Compatible Fluids

- Mineral Oils: HL & HLP
- Water – Oil Emulsion
- Water – Glycol
- Consult factory for other fluids

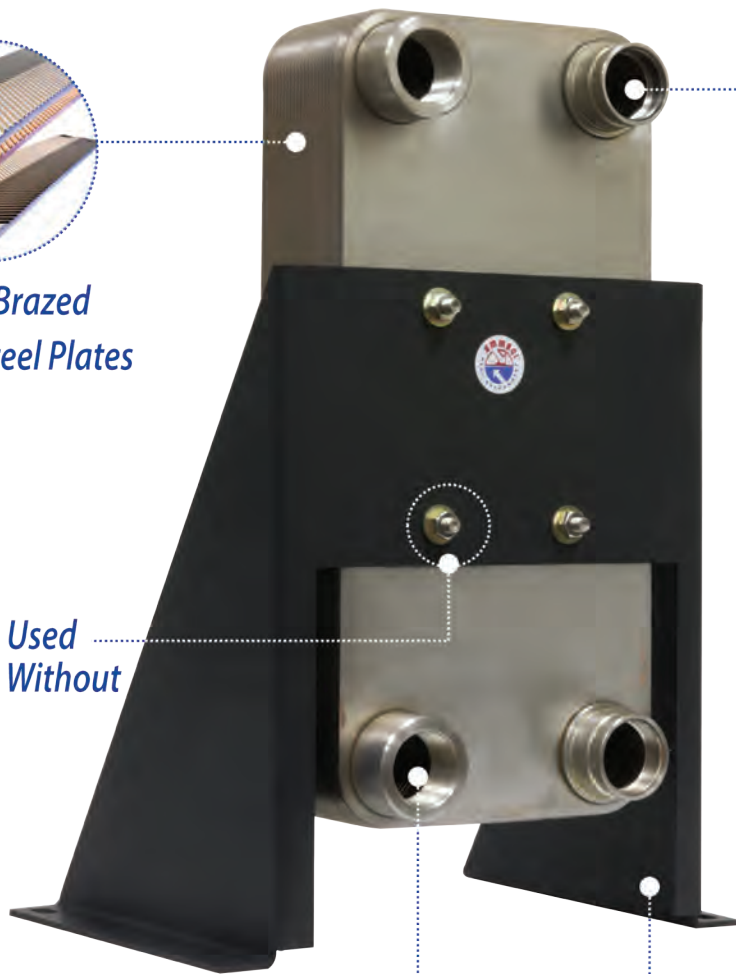
#### Ratings

- Operating Pressure: 435 PSI
- Max Operating Temperature: 435°F

#### Materials

- Plates & Connections:  
AISI 316L Stainless Steel
- Brazing Sheets:  
Copper
- Mounting Brackets:  
Powder Painted Steel

Studs May Be Used  
for Mounting Without  
Foot Bracket



NPT Water Connections

Mounting Foot  
For Ease of Installation

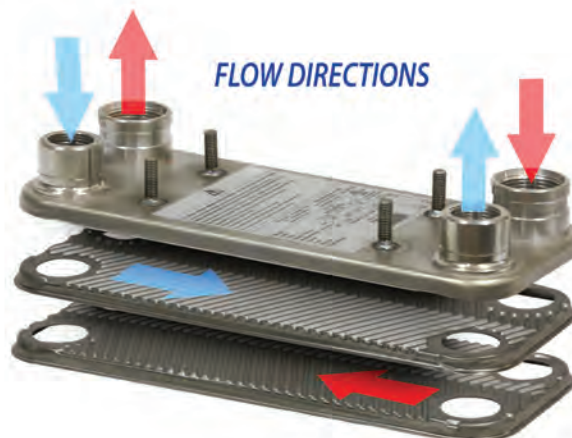
## Installation Information

**Corrosion Resistant:** Stainless steel plates and fittings provide long service life.



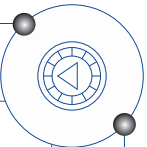
Cutaway shows high density,  
compact brazed plate  
construction

**Compact Performance:** Up to 50% smaller in size than traditional shell & tube construction.

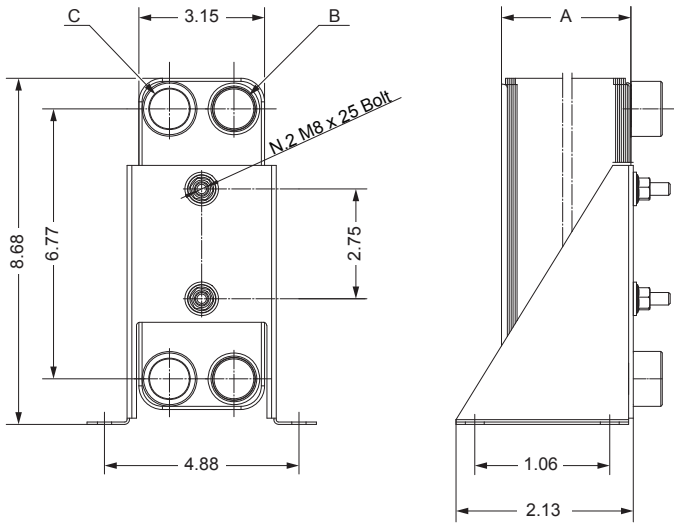
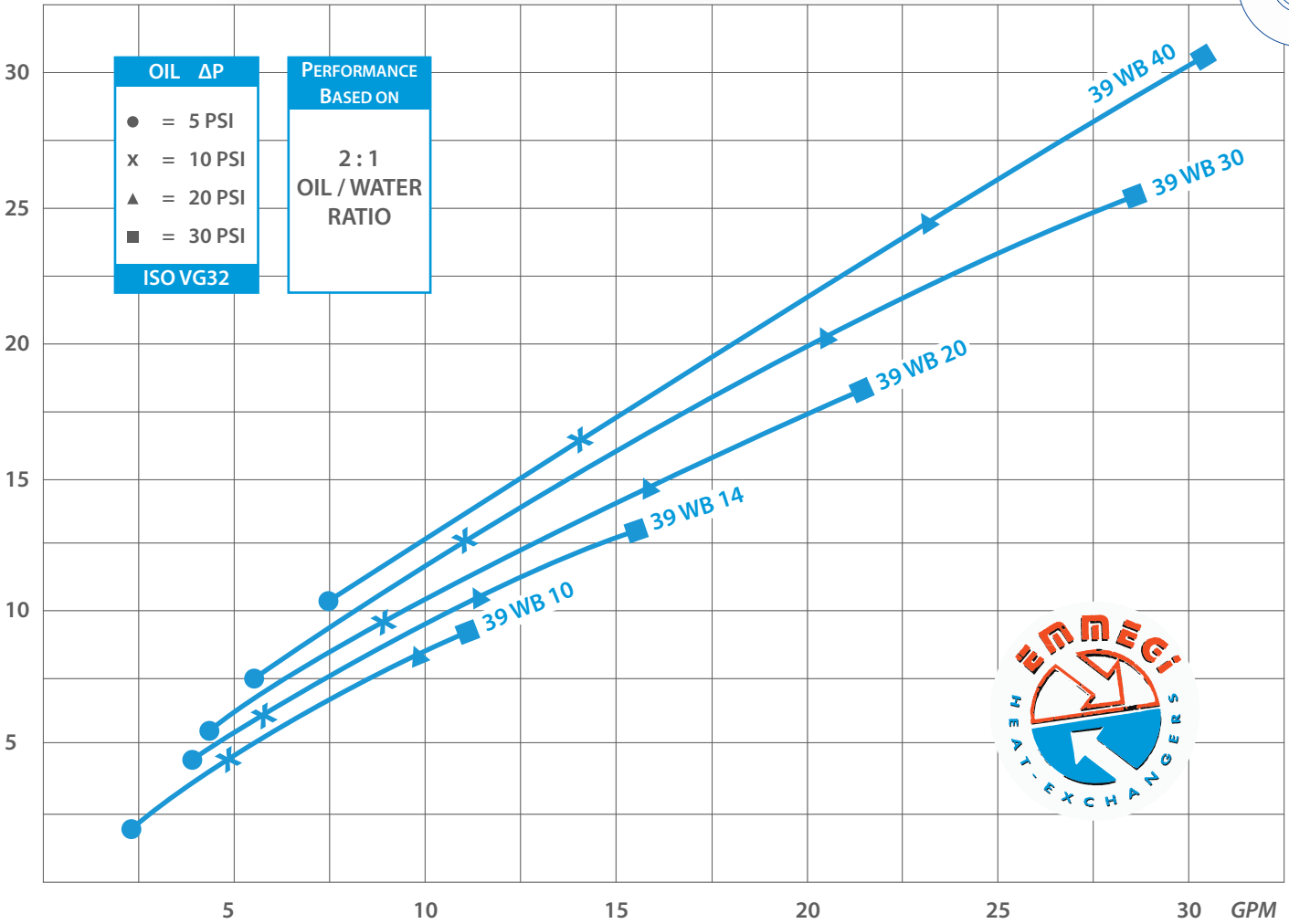


FLOW DIRECTIONS

# 39 WB Series - Dimensions & Performance

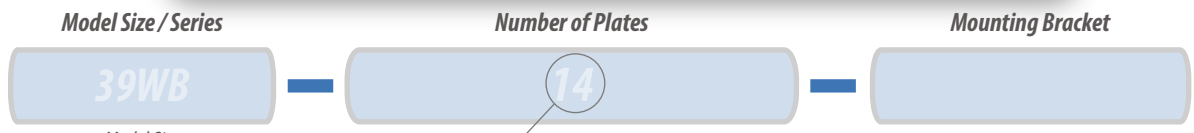


Horsepower Heat Rejection @ 50°F ETD



MODEL	A (inch)	OIL CONNECTIONS		NET WEIGHT LBS.
		B OIL	C WATER	
39 WB 10	1.32	# 10 SAE	1/2" NPT	2.4
39 WB 14	1.70			3.0
39 WB 20	2.28	# 12 SAE	3/4" NPT	3.8
39 WB 30	3.25			5.1
39 WB 40	4.21			6.4

## Ordering Code



39WB = 3" x 9"

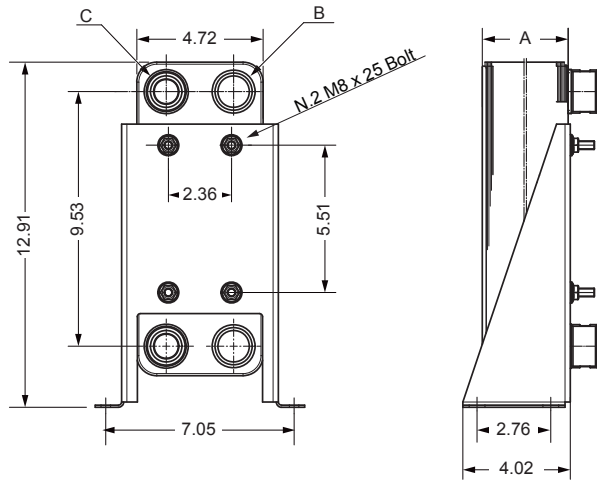
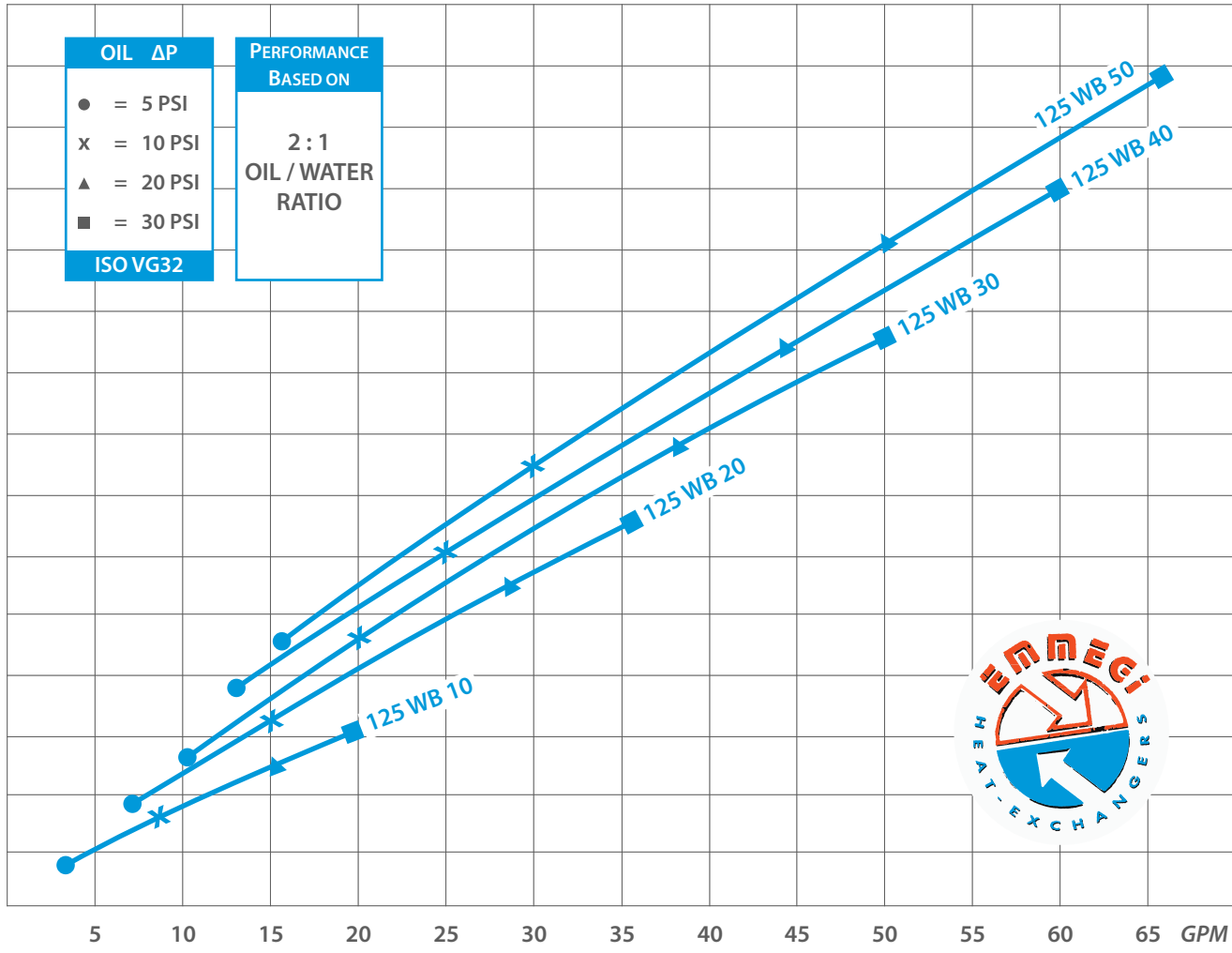
10   14   20   30   40

Blank   Includes Mounting Bracket  
NB   No Mounting Bracket

HEAT-EXCHANGERS

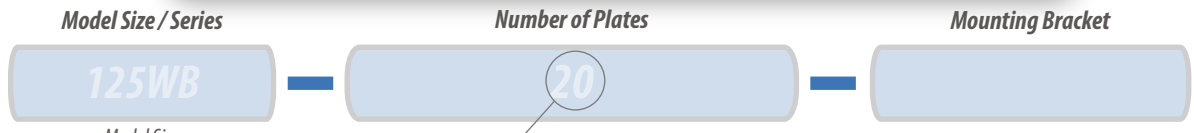
## 125 WB Series - Dimensions & Performance

Horsepower Heat Rejection @ 50°F ETD



MODEL	A (inch)	OIL CONNECTIONS		NET WEIGHT LBS.
		B OIL	C WATER	
125 WB 10	1.28	# 16 SAE	3/4 NPT	6.2
125 WB 20	2.24			8.7
125 WB 30	3.21			11.2
125 WB 40	4.17	# 20 SAE	1 NPT	13.6
125 WB 50	5.12			16.1

## Ordering Code

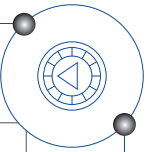


125 WB = 12" x 5"

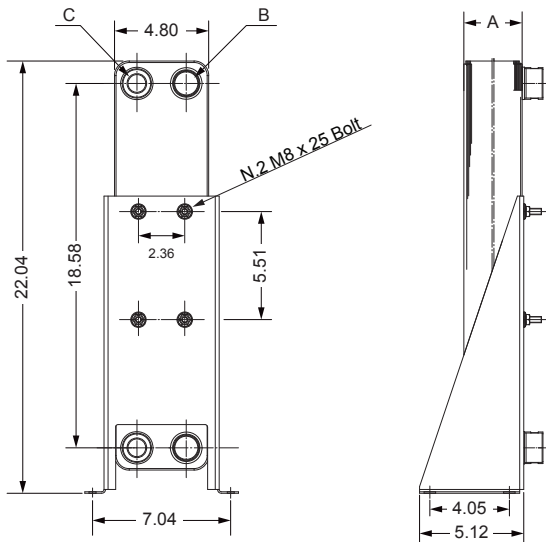
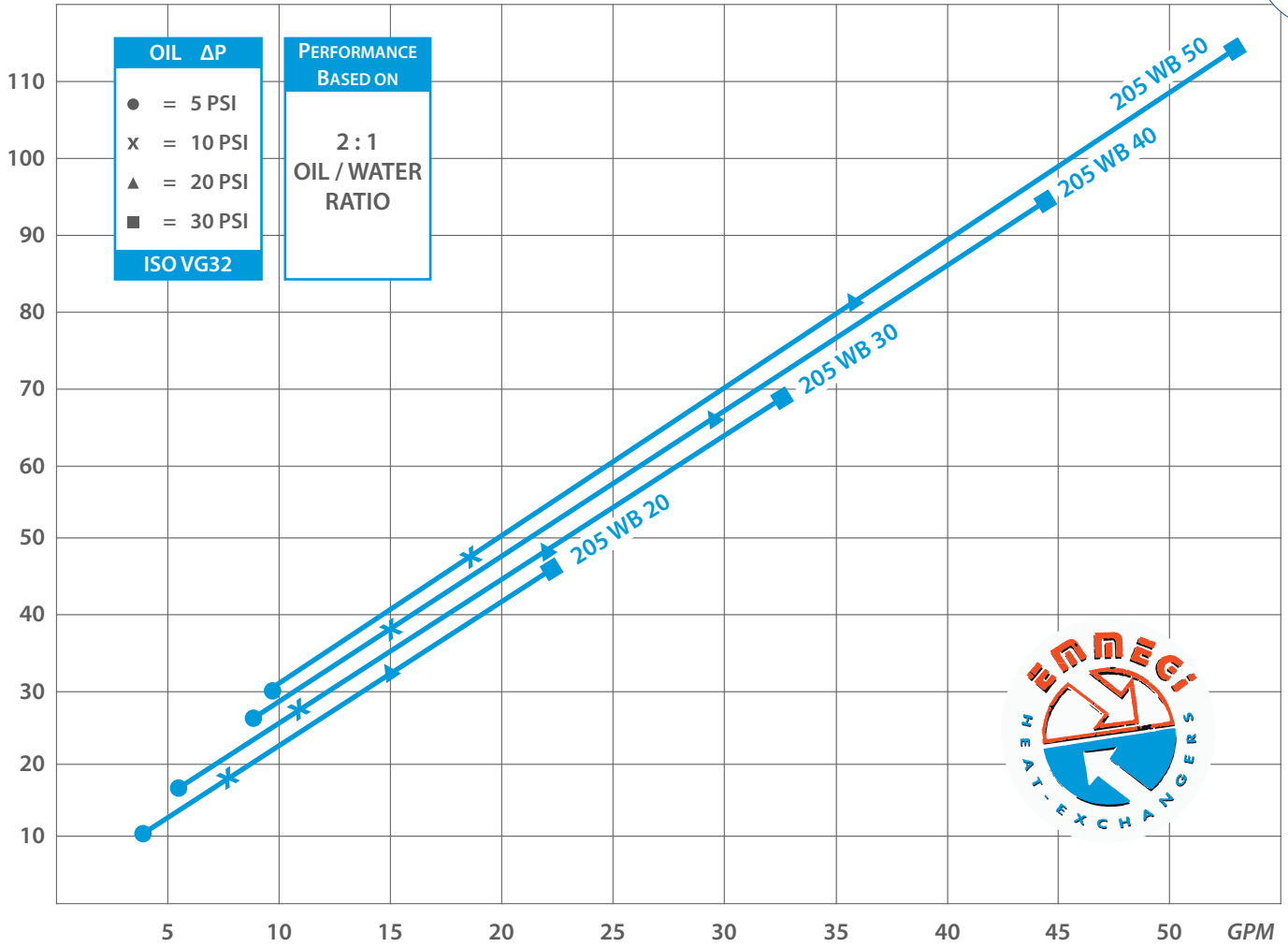
10 20 30 40 50

Blank Includes Mounting Bracket  
NB No Mounting Bracket

# 205 WB Series - Dimensions & Performance

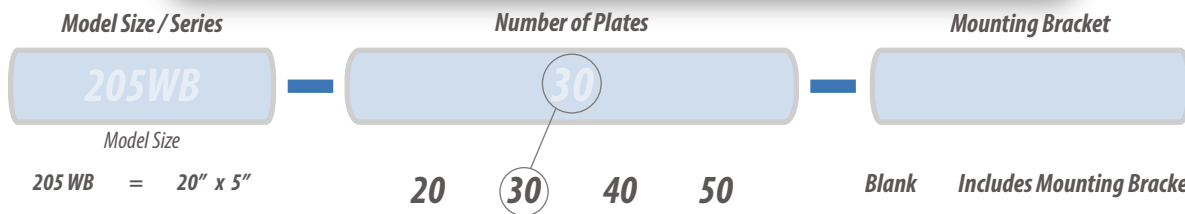


Horsepower Heat Rejection @ 50°F ETD



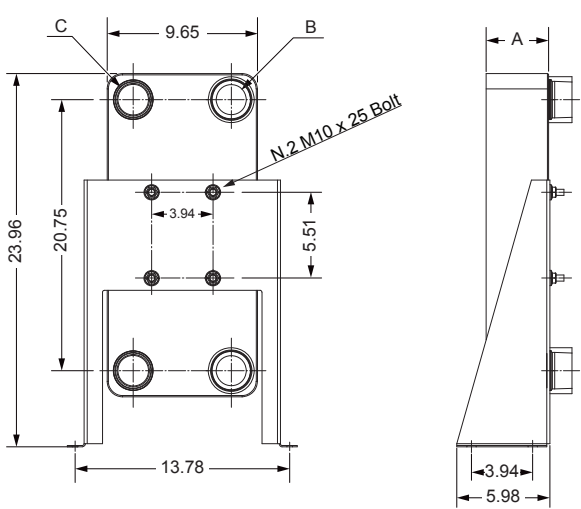
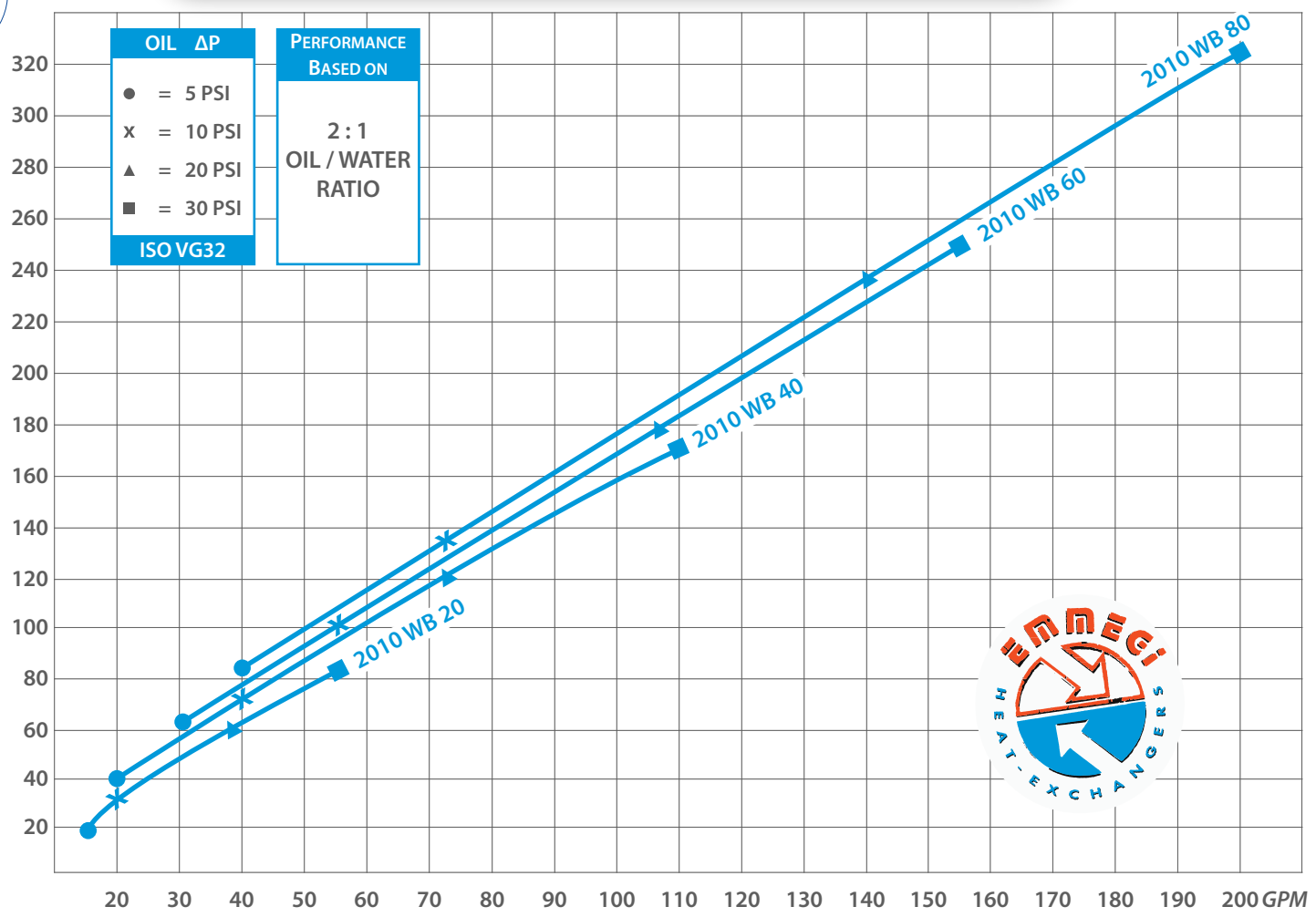
MODEL	A (inch)	OIL CONNECTIONS		NET WEIGHT LBS.
		B OIL	C WATER	
205 WB 20	2.09	# 16 SAE	3/4 NPT	14.6
205 WB 30	2.97			19.1
205 WB 40	3.86	# 20 SAE	1 NPT	23.7
205 WB 50	4.74			28.2

## Ordering Code



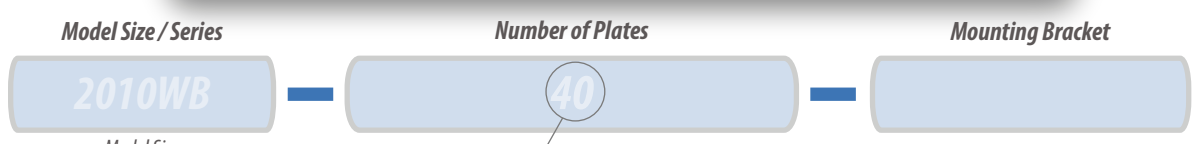
**2010 WB Series - Dimensions & Performance**

Horsepower Heat Rejection @ 50°F ETD



MODEL	A (inch)	OIL CONNECTIONS		NET WEIGHT LBS.
		B OIL	C WATER	
2010 WB 20	2.09	# 20 SAE	1¼ NPT	38.2
2010 WB 40	4.02	# 24 SAE	1½ NPT	56.2
2010 WB 60	5.94	# 32 SAE	2 NPT	74.0
2010 WB 80	9.80			91.9

**Ordering Code**

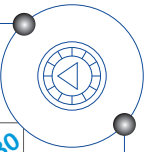


2010WB = 20" x 10"

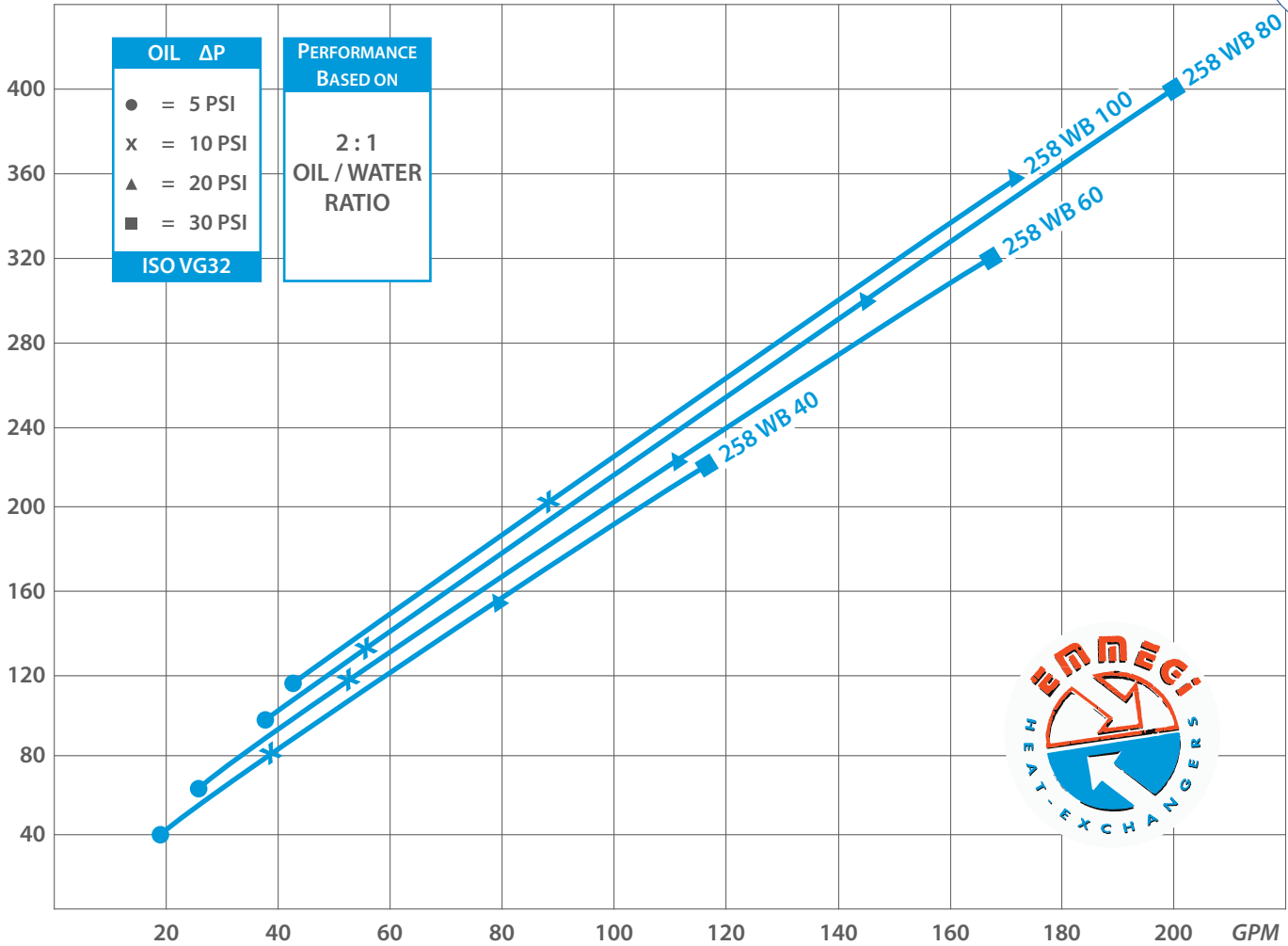
20 40 60 80

Blank Includes Mounting Bracket  
NB No Mounting Bracket

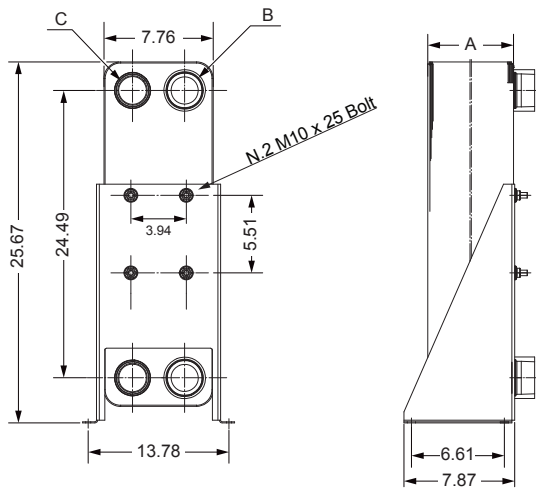
# 258 WB Series - Dimensions & Performance



Horsepower Heat Rejection @ 50°F ETD

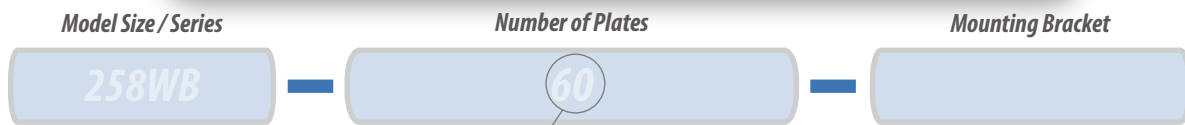


HEAT-EXCHANGERS



MODEL	A (inch)	OIL CONNECTIONS		NET WEIGHT LBS.
		B OIL	C WATER	
258 WB 40	4.17	# 24	1 1/4 NPT	49.1
258 WB 60	6.10	# 32 SAE	2 NPT	75.2
258 WB 80	8.03			109.1
258 WB 100	9.96			126.6

## Ordering Code



Model Size  
258WB = 25" x 8"

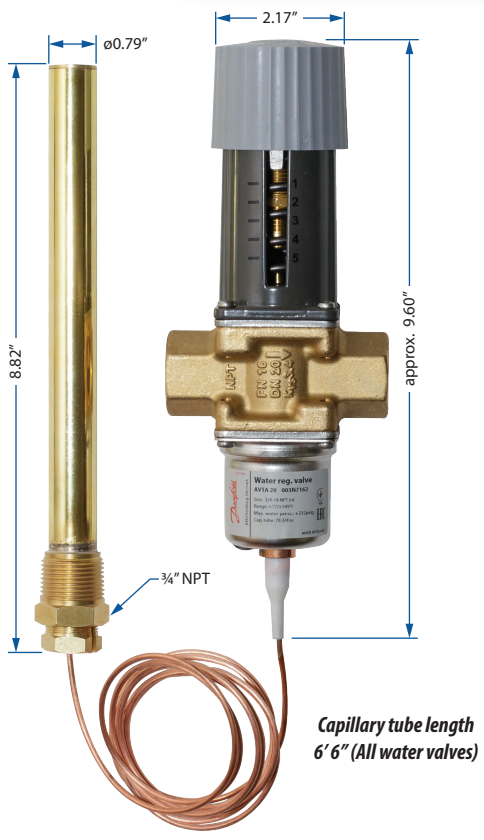
40 60 80 100

Blank Includes Mounting Bracket  
NB No Mounting Bracket

## Thermostatic Operated Water Valves



Normally closed valve opens on rising temperature at the sensing bulb/bulbwell. Modulates water flow into cooler without the need for any other external input. Typically the sensing bulb/bulbwell are installed in the reservoir.



### Installation

An arrow on the valve body indicates the flow direction.

The installation of a WYE Strainer ahead of the valve is recommended.

Care should be taken to not kink the capillary tube during/after installation.

### Details

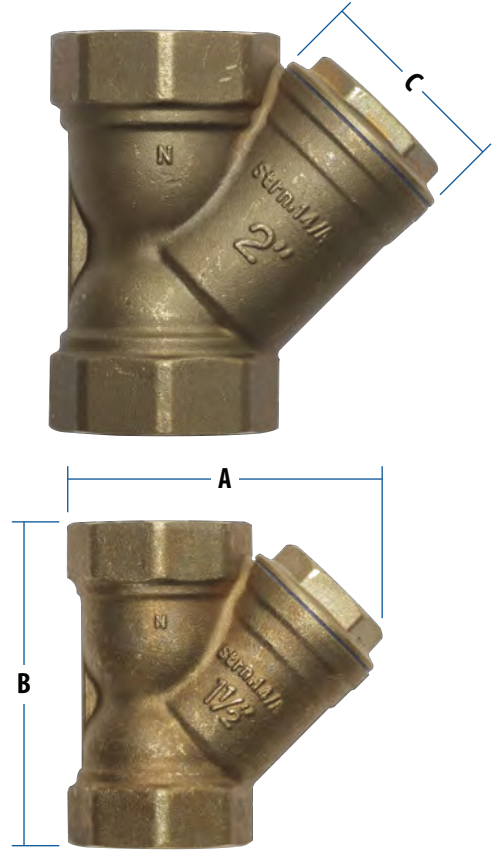
**Max operating temp:** -13°F - 266°F

**Max working pressure:** 232 PSI

Part numbers include both valve and bulbwell

Part Number	Female NPT	Adjustable Temperature Ranges	Max Flow Rate GPM	Weight LBS
AVTA - 0.5 - BW	1/2"	77°F - 149°F 25°C - 65°F	25	3.2
AVTA - 0.75 - BW	3/4"		44	3.3
AVTA - 1.0 - BW	1"		65	3.6

## Bronze WYE Strainer



- Max Pressure = 125 PSI
- 50 Mesh Screens



Part Number	Female NPT	A Inches	B Inches	C Inches	Weight LBS
WYE 050	1/2"	2.1	2.3	1.0	0.2
WYE 075	3/4"	2.4	2.7	1.3	0.4
WYE 100	1"	2.4	2.9	1.6	0.6
WYE 125	1 1/4"	3.6	3.6	2.0	1.2
WYE 150	1 1/2"	3.8	4.0	2.3	1.6
WYE 200	2"	4.7	5.0	2.9	2.6

## Sales Network



### USA

EMMEGI HEAT EXCHANGERS Inc.  
3606 E. Southern Ave. Suite 2  
Phoenix, AZ 85040 USA  
Ph. + 1 602 438 7101  
Fax + 1 602 438 7127  
www.emmegiinc.com  
sales@emmegiinc.com



### SLOVAKIA

EMMEGI HEAT EXCHANGERS s.r.o.  
Ul. M.Razusa 1  
95514 Topolcany  
Ph. + 421 385320739  
Fax + 421 385320742  
www.emmegi-heat-exchangers.com  
sro@emmegi-heat-exchangers.com



### SWEDEN / FINLAND

EMMEGI HEAT EXCHANGERS  
NORDIC AB.

Viaduktgatan 8  
SE 341 32 Lyungby  
Ph. + 46 372-864 90  
www.emmeginordic.se  
info@emmeginordic.se



### TURKEY

EMMEGI HEAT EXCHANGERS TERMAL  
SISTEMLER SANAYI VE TICARET Ltd.şti

Ataşehir Mah. 8229/2 Sokak No:12  
Odin İş Merkezi Çiğli- İzmir/ Turkey  
Ph. + 90 232 449 4244  
Fax + 90 530 392 7636  
www.emmegi-turkey.com  
kudret@emmegi-turkey.com



### UK

EMMEGI HEAT EXCHANGERS UK Ltd.

Unit 820 Jupiter Court Meteor Business Park  
Cheltenham Road Gloucester  
GL2 9QW  
Ph. + 44 01452 540130  
Fax + 44 07825 278394  
www.emmegi.co.uk  
jqugly@emmegi.co.uk



### GERMANY

EMMEGI GmbH  
Philipp-Reis-Straße 2  
41516 Grevenbroich-Kapellen  
Ph. + 49 02182-570 18-0  
Fax + 49 02182-570 18-29  
http://www.emmegi-gmbh.de

## Headquarters



### ITALIA

EMMEGI S.p.A.  
Via Newton,52 - Zona Industriale  
20062 Cassano d'Adda (MI) - Italy  
Tel. +39 0363 360236 - Fax + 39 0363 360230  
http://www.emmegi-heat-exchangers.com  
info@emmegi-heat-exchangers.com

